

# Welcome to Land-Based Engineering

We are looking forward to you joining us in the autumn. You may have studied this subject already or this might be completely new to you. Whatever your starting point, we are ready to support you with your learning.

Land-Based Engineering is a fast-paced and valuable career that covers the servicing, repair, development, production and sales of machines and equipment. Land-Based Engineering is not just about tractors, Turf care, Forestry, Plant equipment, Dairy and sports utility vehicles are all included.

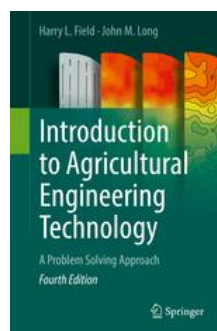
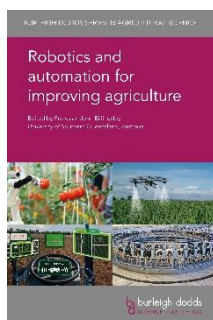
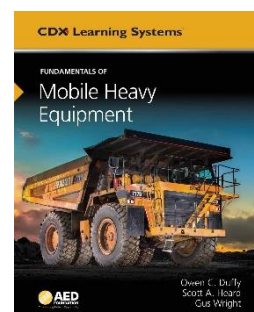
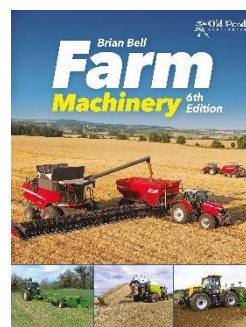
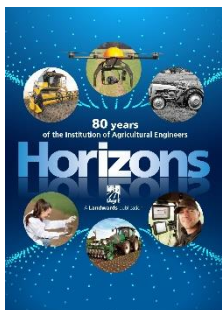
You will find a range of resources below to help you prepare for your course. Keep notes about what you have found out or learnt to support your learning later on.

## Read

Books | Magazines | Newspapers | Magazines

There are lots of Books and Magazine articles available, paper based and online about Land-Based Engineering.

These magazines, books and blogs have key articles, facts and information about the sector for you to browse through.



There are many reliable websites and blogs, which feature relevant articles that you might find useful too. This link is to IAgRE, it sets out careers and professional affiliation. IAgRE also have testimonials from people working in the sector. <https://iagre.org/>

## Watch

TV | Movies | You Tube

Numerous TV series' and YouTube videos focus on Land-Based Engineering. Watching these could help introduce you to some of the topics and specialist language we will explore.



Lamborghini: never insult a Tractor Tycoon

<https://www.youtube.com/watch?v=T5p4sAkjLSI>



[https://www.channel4.com/programmes/guy-martin-worlds- fastest-tractor](https://www.channel4.com/programmes/guy-martin-worlds-fastest-tractor)

Other shows that are a worthwhile watch include;

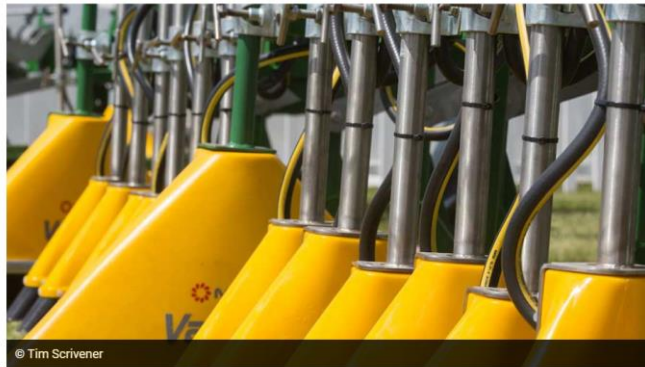
- Grassmen
  - World's largest tractor production factory
- <https://www.youtube.com/watch?v=jk6eVCq5nOs>

# Listen

Podcast | Radio | Audible

This Podcast covers machinery spares availability during the Covid19 pandemic,  
<https://www.fwi.co.uk/news/farmers-weekly-podcast-episode-5-dairy-aid-and-machinery-spares>

## Farmers Weekly Podcast Episode 5: Dairy aid and machinery spares



This Podcast show covers emerging technologies within the Land-based Sector,  
<https://www.stitcher.com/podcast/rdo-equipment-co/agriculture-technology>



# Get Involved

Competitions | Social Media | Webinar | MOOCs

We have two face book pages that you can follow to see how our current learners are progressing through their courses.

<https://www.facebook.com/BICTONENGINEERS/>

Land Based Engineering at Bicton College  
@BICTONENGINEERS

Home  
About  
Photos  
Videos  
Posts  
Community

Photos

Land Based Engineering at Bicton College  
Higher education in East Budleigh

Community  
566 people like this  
587 people follow this

About  
See all

Budleigh Salterton, Devon  
Bicton College, Budleigh Salterton (100.87 km)  
Devon, EX9 7BY East Budleigh  
Get Directions  
01395 562400  
www.bicton.ac.uk/search/?s=land-based+engin  
Higher education

Page transparency  
Facebook is showing information to help you better

[https://www.facebook.com/Duchy-College-Engineering-514482682062282/?ref=py\\_c](https://www.facebook.com/Duchy-College-Engineering-514482682062282/?ref=py_c)

Duchy College Engineering

Home  
About  
Photos  
Events  
Videos  
Posts  
Community  
Create a Page

Share Suggest Edits Block Page

Contact Us Send Message

Education

Community  
249 people like this  
263 people follow this

About  
See all

www.duchy.ac.uk  
Education  
Impressum

Page transparency  
Facebook is showing information to help you better understand the purpose of a Page. See actions taken by the people who manage and post content.  
Page created - 26 January 2016

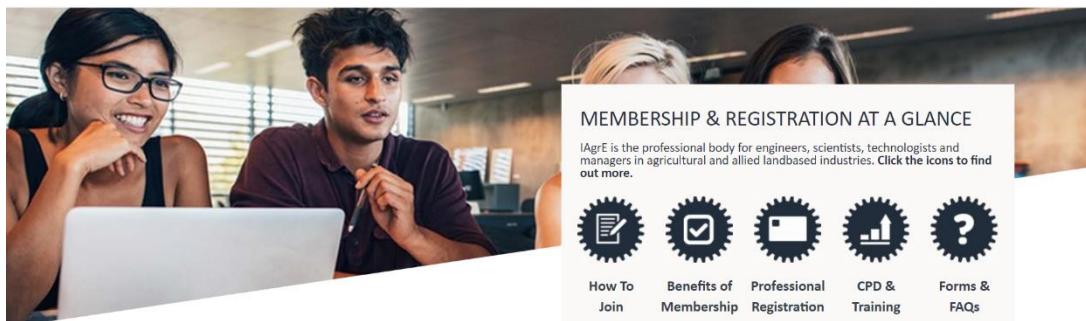
People  
249 likes

Pages Businesses Education Duchy College



IAgrE is a great place to start getting involved with Land-based Engineering.

<https://iagre.org/advice-for-school-leavers>



**MEMBERSHIP & REGISTRATION AT A GLANCE**

IAgrE is the professional body for engineers, scientists, technologists and managers in agricultural and allied landbased industries. Click the icons to find out more.

- How To Join
- Benefits of Membership
- Professional Registration
- CPD & Training
- Forms & FAQs

### ADVICE FOR SCHOOL LEAVERS

Landbased Engineering is an exciting and varied career.

EClips produce a great leaflet detailing the information you need - [find the leaflet here](#).

Farmers, agricultural contractors, sports turf professionals, foresters etc all rely on modern technology to help them with their work. Land-based engineers are responsible for developing, manufacturing, selling and servicing the machinery and vehicles they use. There are careers for engineering graduates, and for technicians and other staff with lower-level qualifications.

LE-TEC has useful links to events and downloads.


<http://landbasedengineering.com/>

**LE-TEC**  
Landbased Engineering Training and Education Committee Limited

Email us [info@letec.co.uk](mailto:info@letec.co.uk)

Search...

- Home
- Careers
- Apprenticeships
- Full Time Study
- Contact
- LTA Registration
- Information
- Professional Qualifications
- Training
- Events
- News



What is landbased engineering?